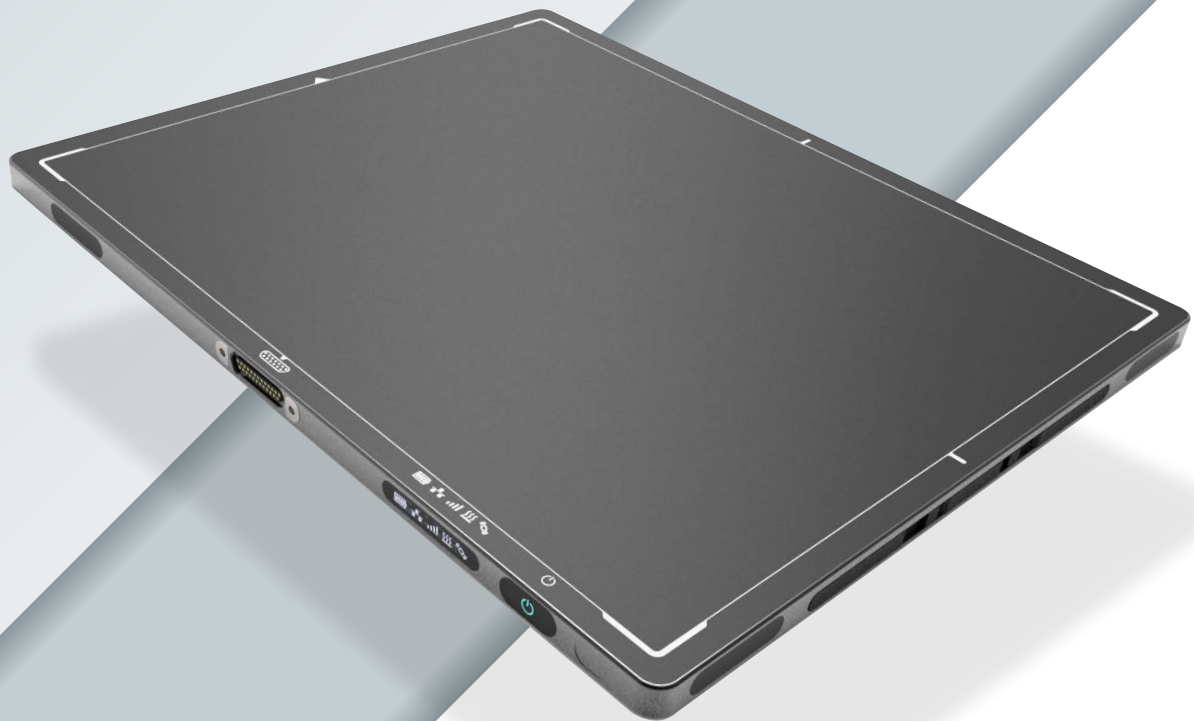


# COMPACT & WIRELESS **DRA 3543 NDT**

HIGH-RESOLUTION FLAT PANEL DETECTOR



*Digital Intelligence - Ready to Change.*  
[www.duerr-ndt.com](http://www.duerr-ndt.com)



## Technical data

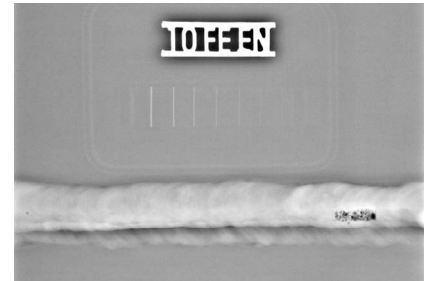
## DRA 3543 NDT

<b>Active area</b>	350 mm x 426 mm (14" x 17")
<b>Dimensions</b> (H x W x D)	384 mm x 460 mm x 15.5 mm
<b>Weight</b>	4.6 kg (10.1 lbs)
<b>Number of pixels</b>	3524 x 4288
<b>Exposure time</b>	0.5 s to 180 s
<b>Image transfer time</b> (wired/wireless)	0.5/3 s
<b>Max. energy</b>	270 kV (for long life in typical applications), Isotopes (higher energies possible)
<b>Pixel pitch</b>	100 µm
<b>Scintillator options</b>	CsI, GOS
<b>ADC</b>	16-bit
<b>Interface</b>	Gigabit Ethernet, WLAN (802.11n @ 5 GHz)
<b>Battery</b>	Lithium-ion (11.1 V, 5800 mAh), charging time 3h
<b>Operating conditions</b>	-20 to 50°C (-4 to 122°F), 20 to 80 % humidity
<b>Protection level</b>	IP54 (dust and splash water protected)
<b>Housing</b>	Aluminum frame, carbon-fiber entrance window (150 kg area load)
<b>Software</b>	DÜRR NDT D-Tect 9.9 or higher
<b>Accessories</b>	Hard case, mounting frame, protection bag

### Important features

- ✓ High resolution 100 µm pixel pitch (5.0 lp/mm)
- ✓ Suitable for X-ray and gamma sources
- ✓ Built-in wireless access point
- ✓ OLED display with Wi-Fi, LAN, battery, and sensor status indicators
- ✓ Docking connector for Gigabit Ethernet, power and data sync

### Sample images



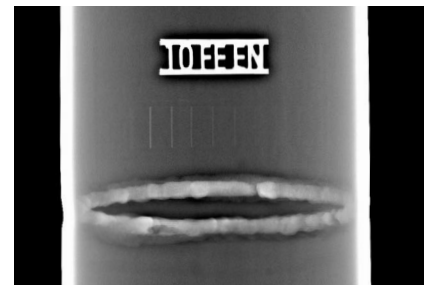
Weld seam, 6 mm steel plate, X-ray (ISO 17636-2 Class B compliant).



Waterproof hard case for detector, batteries, charger and cables.



Robust mounting frame with adjustable lashing eyes and adapter plates for tripod mount.



Double wall examination, DN 86 mm, t = 3.6 mm, X-ray, Elliptic technique (ISO 17636-2 Figure 11).

DÜRR NDT GmbH & Co. KG  
Höpfigheimer Straße 22  
74321 Bietigheim-Bissingen  
Germany

info@duerr-ndt.com  
www.duerr-ndt.com

